



Dear friends and neighbors,

At the Jesup Memorial Library, we are creating a place for everyone. A place for community members to discover, connect, and grow.

Over the past few years, we have shored up the foundations of our 111-year-old building, made it watertight against the weather and cleared the way for a graceful expansion. Our new wing will add dynamic and sunlit spaces for children and teens, common spaces for large events and community conversations, and several designated spaces for private work or small group meetings, and of course room for more books!. The addition will include elevator access to all levels of both wings, accessible restrooms, climate-controlled archives, and exhibit space for local artists to display their work.

In designing our expansion, we have engaged dozens of patrons and community members to plan a library that truly serves Bar Harbor now and into the future. By preserving the historic library and adding on a modern wing, our architects have created a design that complements our 1911 library, and lays the groundwork for the next 100 years of accessible, inclusive public service for our community. We plan to use energy conserving materials and technology, and to build in future-proofing options that will keep the space relevant for decades to come.

When the work is done, we will have a true community center, poised to contribute to our changing times, for those who live here now and for those who will make their home here in the future.

We at the Jesup believe, as Andrew Carnegie said, ***“A library outranks any other one thing a community can do to benefit its people. It is a never-failing spring in the desert.”***

This is the first capital campaign in our library’s history. Supporters have donated an extraordinary \$10.5 million so far, leaving us \$2 million to go. With your help, we’ll break ground in 2023.

We invite you to join your neighbors and make a gift, an investment in the future of our library and our community. Together, we’ll keep that spring a’flowing!

Ron Beard and Matt DeLaney  
Board Chair and Library Director

P.S. Your gift today will allow us to begin construction early next year.



Jesup

Bar Harbor's  
future is

here





# discover

The Jesup keeps our community **vibrant and engaged** year-round.

We are a different community than when the Jesup was built in 1911 – and we use the library in vastly different ways.

The **authentic connections** we make at the Jesup are needed now more than ever.

Our future depends on spaces that will encourage dialogue, equal access, diversity, and coming together to tackle our greatest challenges.

The Jesup helps young people **find their place**.

The expanded Jesup will bring teens and children of all ages together for skill-building, mentorship, movement, creativity, performance, and play.

# connect

# grow

# Warm. Welcoming. Like family.



The Jesup has remained essentially unchanged for more than 100 years – and is bursting at the seams.

Our new, modern wing will create a safe, welcoming, and empowering public space in the heart of our community equipped with:

- an **elevator** for full accessibility
- more shelving space to **expand the collection**
- flexible **meeting spaces** that are easy to set up and rearrange
- **climate-controlled archives** for our historical documents and maps
- **updated technology**
- a spacious, inviting **children's room** and dedicated areas for **young adults**

The things we love most about the Jesup will never change. Major improvements will prepare us for the next 100 years.



## Help us build Bar Harbor's future

Our expansion design, reflecting years of community input, doubles our footprint while maintaining the warmth and comfort of our historic building. With your support, the Jesup will be an engine of opportunity for all.

Discover, connect, and grow with us.

# A once-in-a-century community project

The expansion will give Bar Harbor a modern creative and cultural center deeply rooted in our Island's history. Together we can create a world-class institution that offers something to inspire and energize everyone.



STREET VIEW OF STORYTIME CORNER & MAIN ENTRANCE COURTYARD

## SPECIAL COLLECTIONS & RESEARCH

A new archive & special collections facility will feature temperature and humidity control, work tables, a scanner, and computers for genealogical research. Researchers will be able to access priceless maps and historic materials while enjoying a unique view of the mountains.

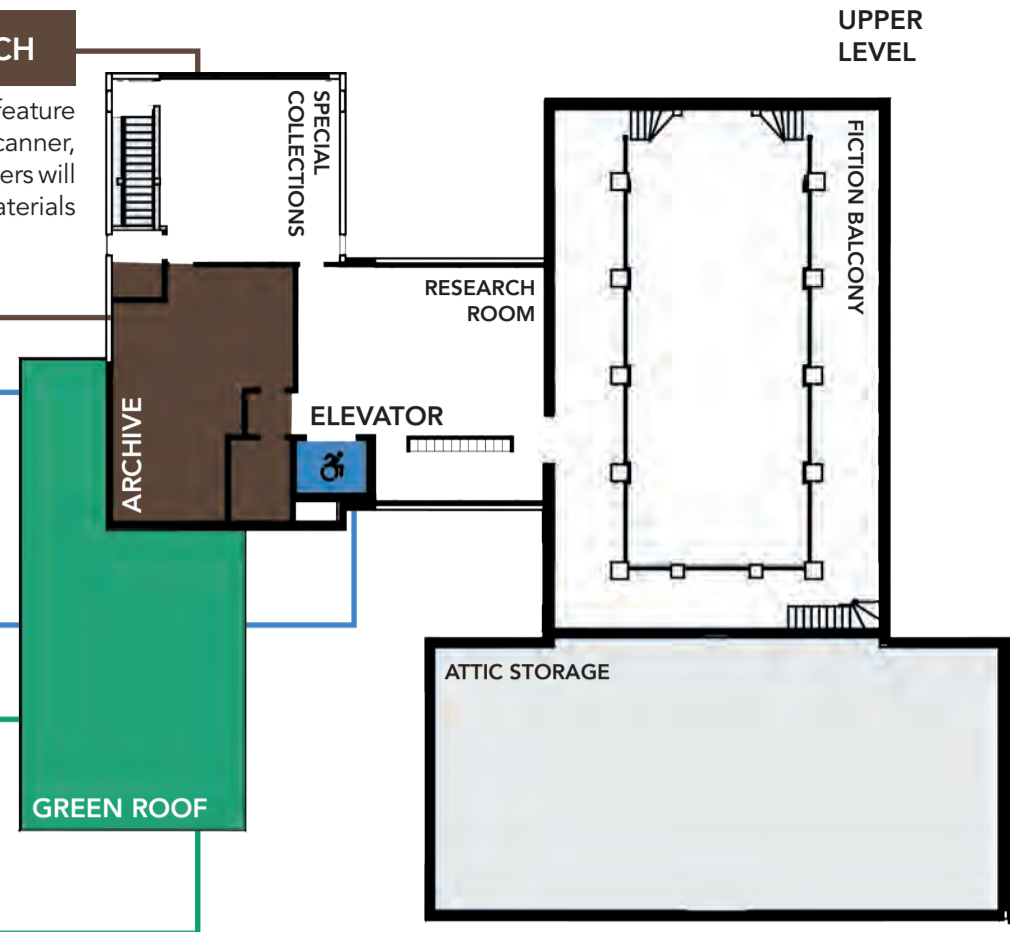
## ACCESSIBILITY



At long last, an elevator will allow step-free access to all parts of the Jesup, including the Reading Room balcony. Bathrooms will be designed to maneuver wheelchairs and mobility aids.

## SUSTAINABLE FEATURES

An energy efficient envelope and mechanical systems will harvest as much natural daylight as possible, reducing lighting and electrical loads, with a green roof above the youth services area.



## DEDICATED TEEN AREA

Teens will finally have their own space with comfortable seating and gathering spaces that are flexible and allow for independent study or collaboration. Two quiet/noisy rooms will be sound-insulated for phone calls, tutoring, or small meetings. Teens will have their own collection area, and the youth services staff will be immediately accessible for both children and young adults.



"The Jesup is a relaxing place to read, do homework, or meet people. There aren't other places someone my age can go after school and just hang out."

-Molly, Bar Harbor (with MacDuff)



## SPACIOUS CHILDREN'S ROOM

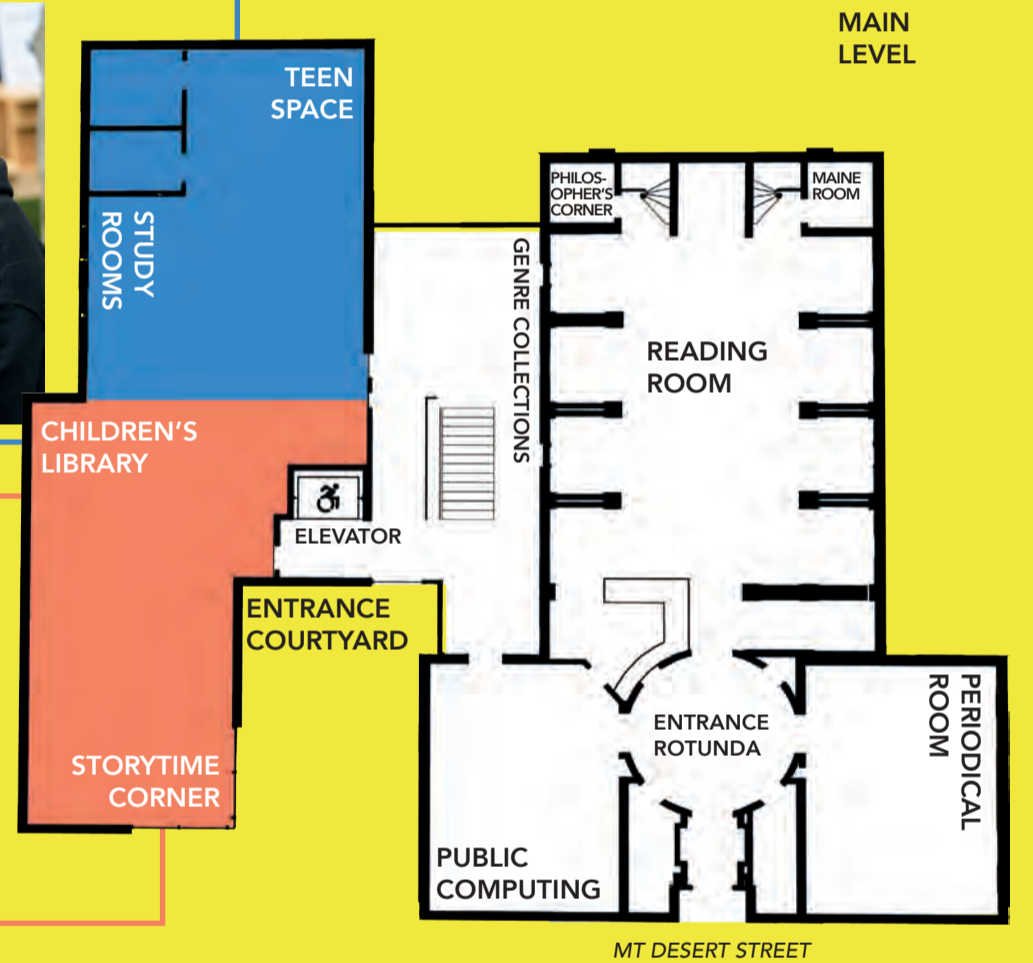
Kids will enjoy more room for books and story times in their own special area with lots of sunlight. There will be many more places for children to read, learn, and play together and with family, whether making a craft, dancing to a music program, or building with Legos. Family-friendly bathrooms will feature low fixtures designed for young children.

"We moved to MDI when our daughter was born because we love the community. The library encompasses all that we love about the island. Amelia's love of books has been fostered through storytimes; we have developed friendships and expanded our knowledge through local speakers. The library has provided a place for all of this and we are so grateful."

-Susan & Tony, Mount Desert (with Tina and Amelia)



STORYTIME CORNER



## COMMUNITY EVENT ROOM

A reconfigurable space for programs, performances, lectures, and community events will have a capacity for up to 150 people, a separate entrance for after-hours programming, and a kitchen. A movable wall will serve to separate the space into a makerspace suited for hands-on activities and creative technology from sewing to 3D printing to bicycle maintenance.



"We just moved to Bar Harbor and want more spaces to meet people in the community."

-Susanna & Zeke, Bar Harbor

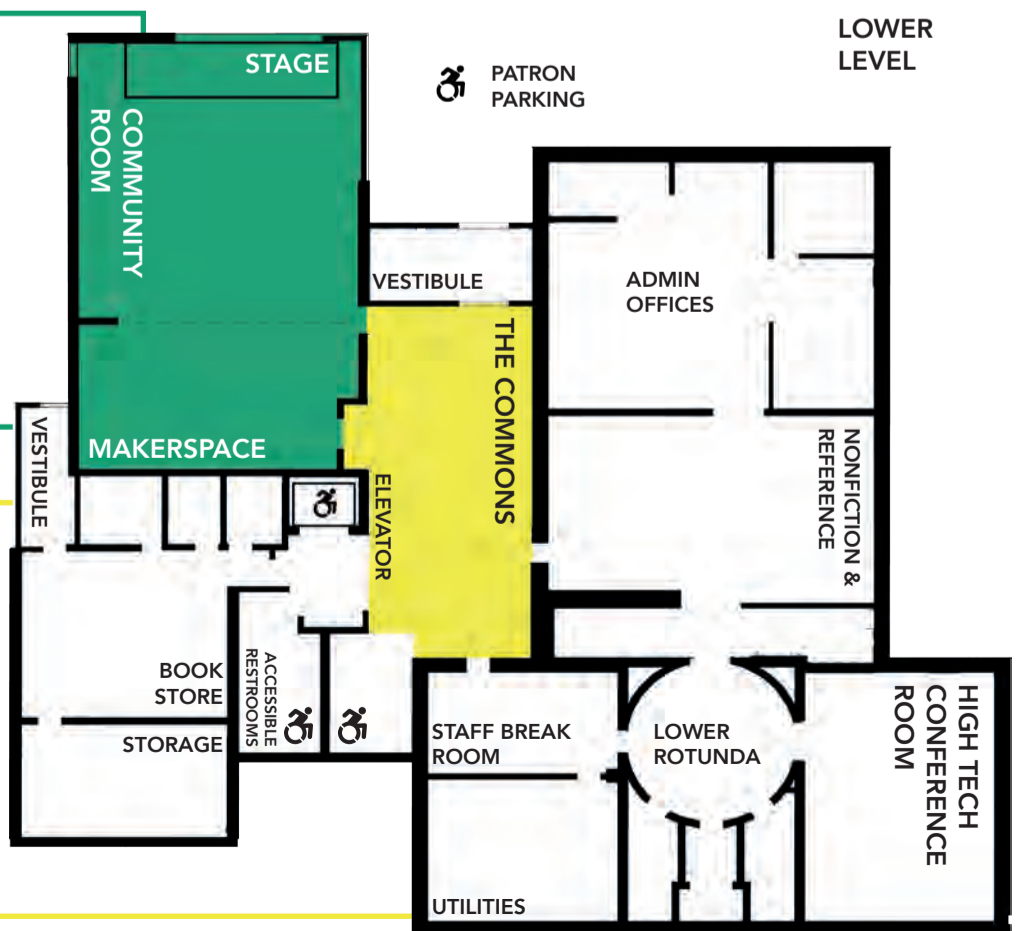


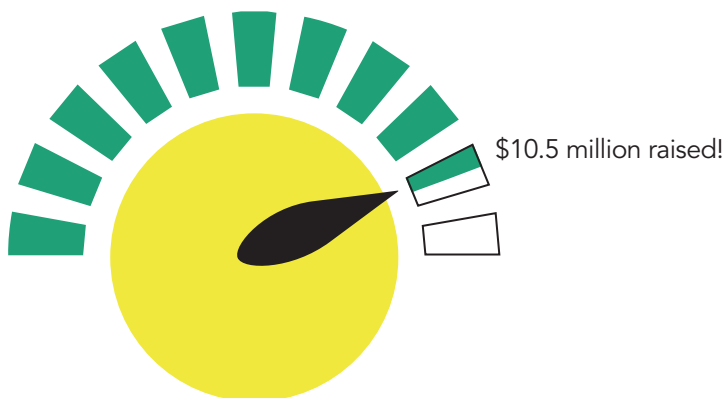
## COMMON SPACE FOR ALL

Between the new and old buildings will be a bright, open space for casual conversations, light refreshments, and rotating exhibits on a gallery wall. The Commons will lend itself to chance encounters, friendly meetups, discussions, game nights, and community conversations.

"The Jesup is an essential community resource. It's not just a library, it's a meeting place. Whether it's a storytime, Girls Who Code, knitting group, or astronomy club, the library is a place for everyone. I truly feel Jesup is the heart of the community. Let's support it, and let's do it together."

-Neha, Bar Harbor





# The time is now: we need your gift *today* to begin construction in 2023!

We're only **\$2 million** away from our **\$12.5 million goal**. To break ground in the spring, fundraising must be completed by **September 30th**.

Pledges of \$1,000 or more made by September 30th will be recognized with an engraved leaf on a tree made from the Jesup's original 1911 roof copper, to be installed at the entrance of the new wing.





# Leave a legacy

Mark your place in history on a donor tree at the entrance to the new wing facing Mount Desert Street! Your name or message will be engraved on a leaf made from the Jesup's original 1911 roof copper.



Rendering of donor tree placement at new entrance facing Mt. Desert Street

### Contact Information

*(in case we need to clarify your order)*

\_\_\_\_\_  
Name

\_\_\_\_\_  
Email Address

\_\_\_\_\_  
Phone Number

Donors at the following levels are invited to add their 40-character name or message to leaves of the following sizes:

**\$50,000+**

10-inch leaf with large cut-out name(s)

**\$10,000+**

8-inch leaf with medium cut-out name(s)

**\$1,000+**

5-inch leaf with small cut-out name(s)

Text for your leaf (max 20 characters per line):

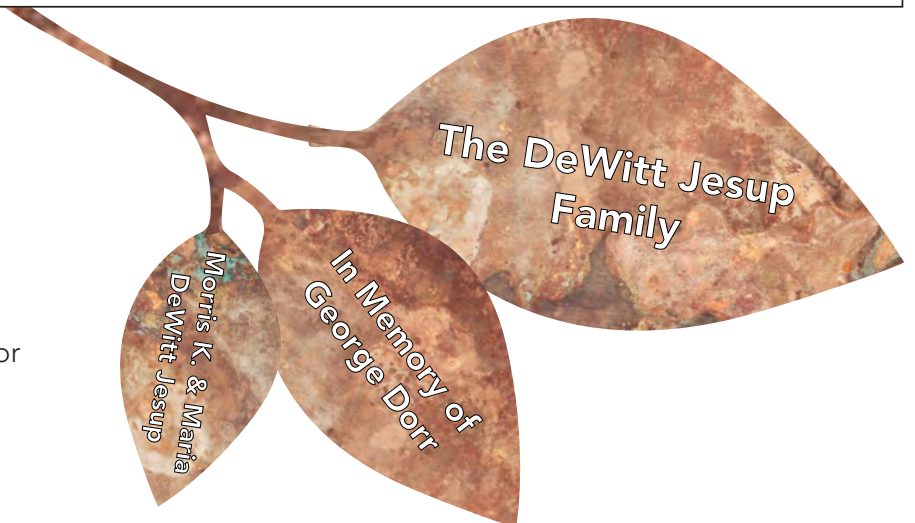
<input type="text"/>	<input type="text"/>	<input type="text"/>	<input type="text"/>	<input type="text"/>	<input type="text"/>	<input type="text"/>	<input type="text"/>	<input type="text"/>	<input type="text"/>	<input type="text"/>	<input type="text"/>	<input type="text"/>	<input type="text"/>	<input type="text"/>	<input type="text"/>	<input type="text"/>	<input type="text"/>	<input type="text"/>	<input type="text"/>
<input type="text"/>	<input type="text"/>	<input type="text"/>	<input type="text"/>	<input type="text"/>	<input type="text"/>	<input type="text"/>	<input type="text"/>	<input type="text"/>	<input type="text"/>	<input type="text"/>	<input type="text"/>	<input type="text"/>	<input type="text"/>	<input type="text"/>	<input type="text"/>	<input type="text"/>	<input type="text"/>	<input type="text"/>	<input type="text"/>

*Please print clearly and leave blank squares for spaces. Add punctuation in its own box.*

Leaves must be ordered with a completed pledge form by September 30th, 2022!

If you would like a leaf for an existing pledge or gift, please contact:

Lila Miller  
Advancement & Community Relations Director  
lmiller@jesuplibrary.org  
(207) 420-2418





# Jesup Capital Campaign Pledge Form

**Yes! I wish to commit \$ \_\_\_\_\_ to the Jesup Capital Campaign.**

**Names:** \_\_\_\_\_  
(please print names as you wish them to appear in donor acknowledgment material)

**Address:** \_\_\_\_\_  
\_\_\_\_\_

**Phone:** \_\_\_\_\_

**Email Address:** \_\_\_\_\_

**Signature (1):** \_\_\_\_\_ **Date:** \_\_\_\_\_

**Signature (2):** \_\_\_\_\_ **Date:** \_\_\_\_\_

I/We prefer to remain anonymous in any publications

This is a one-time gift and my/our check for \$ \_\_\_\_\_ is enclosed  
(made payable to Jesup Memorial Library with "Capital Campaign" on the memo line)

I/We wish to pay our contribution in the following installments

2022: \_\_\_\_\_  
Month/Amount

2023: \_\_\_\_\_  
Month/Amount

2024: \_\_\_\_\_  
Month/Amount

2025: \_\_\_\_\_  
Month/Amount

2026: \_\_\_\_\_  
Month/Amount

This contribution is in honor/memory of: \_\_\_\_\_

Please apply my contribution to the following named gift opportunity: \_\_\_\_\_

**Thank You!**